



Psi Value (Ψ) Calculations & Report

CERTIFICATE REF:
HTP-150F-0.034-0.28

External wall construction including Hi-therm Lintel:

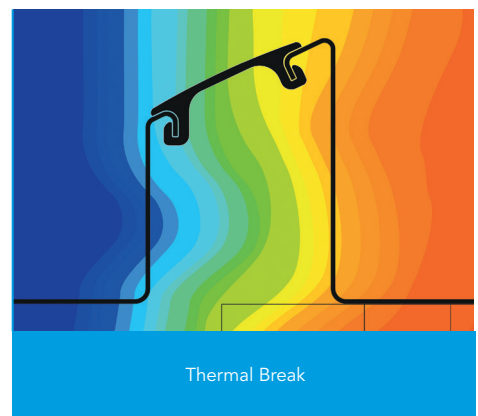
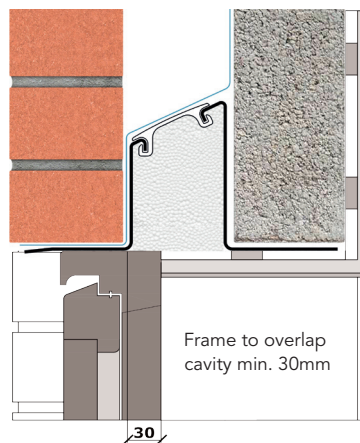
CAVITY WIDTH 150mm	CAVITY INSULATION TYPE Mineral Wool / Blown Fibre
CAVITY INSULATION FILL Full	BLOCK TYPE Ultra Lightweight

Psi Value (ψ)
0.064
(W/mK)

Material Thermal Conductivities (W/mK)

Material	Thickness (mm)	Conductivity (W/mK)
External Brick	100	0.770
Pumped Bead	150mm	0.034
Ultra Lightweight	100	0.28
Plaster Dabs & Air space	10	0.066
Plaster Board	12.5	0.190

This report was carried out using Physibel Trisco thermal analysis software and the modeling follows the conventions set out for calculating linear thermal transmittance and temperature factors in accordance with BR497.



Temperature Factor
 $f = 0.89$
(DEFAULT 0.75)

U Value
0.183
(W/m²K)

